

OPEN
nDemand

Zach Byerly
HPC User Services
LSU HPC LONI
sys-help@loni.org

Louisiana State University
Baton Rouge
November 3, 2021

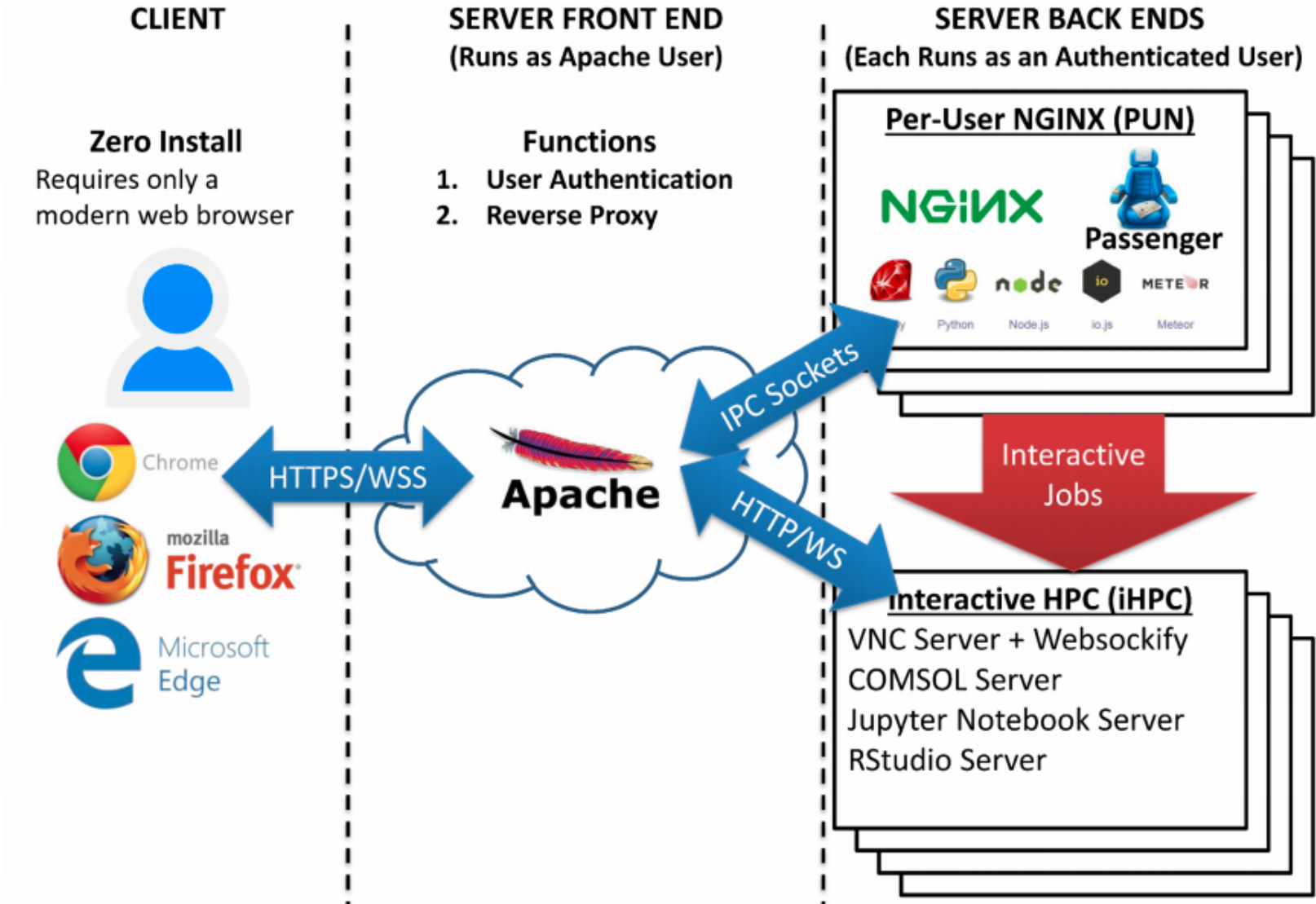
- **Things to be covered in the training**
 - What is Open OnDemand?
 - Open OnDemand Architecture
 - Open OnDemand at LSU
 - Getting Started
 - New users: create LSU HPC account
 - Logging into Open OnDemand
 - Walkthrough
 - File Explorer
 - Shell Access
 - Submit and Monitor Jobs
 - Apps: Jupyter, RStudio, and MATLAB, so far

➤ **Open, Interactive HPC via the Web**

- Easy to use, plugin-free, web-based access to supercomputers
- File Management
- Command-line shell access
- Job management and monitoring
- Applications (currently Jupyter and Rstudio)

➤ **NSF-funded project**

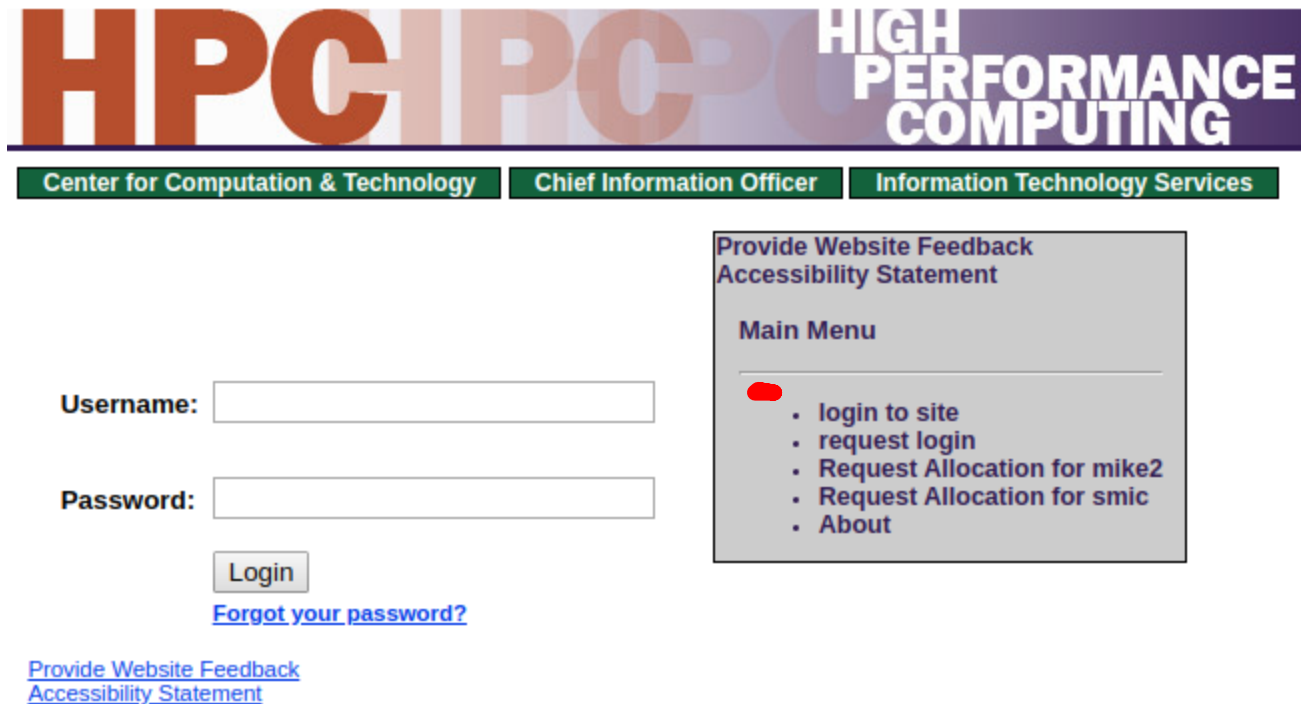
- SI2-SSE-1534949 and CSSI-Software-Frameworks-1835725
- Ohio Supercomputing Center
- Deployed at dozens of sites (universities, supercomputing centers)



- **Previously only available for SuperMike-II cluster**
- **New version up and running on SuperMIC**
- **Accessible on campus (wired and eduroam) and via LSU's VPN**
 - Installing GlobalProtect: `grok.lsu.edu` -> search "vpn"
 - Instructions for Mac, Windows, Linux
- **Launched late 2019**
- **Opened on SuperMIKE-II to all LSU HPC users February 2020**
- **Functionality currently available:**
 - File Browser, Allocation balances & Disk quotas
 - Submit and Monitor Jobs
 - Shell Access
 - Interactive Apps:
 - Jupyter Notebooks
 - RStudio

➤ **What do I need?**

- **LSU HPC account (and active allocation)**
- **New users: accounts.hpc.lsu.edu → “request login”**



The screenshot shows the HPC login interface. At the top, there is a banner with 'HPC' in large orange letters and 'HIGH PERFORMANCE COMPUTING' in white on a dark purple background. Below the banner are three green navigation buttons: 'Center for Computation & Technology', 'Chief Information Officer', and 'Information Technology Services'. The main content area contains a login form with 'Username:' and 'Password:' labels, each followed by a text input field. Below the password field is a 'Login' button and a blue link for 'Forgot your password?'. To the right of the login form is a grey box containing a 'Main Menu' with a red dot next to the first item, 'login to site'. Other menu items include 'request login', 'Request Allocation for mike2', 'Request Allocation for smic', and 'About'. At the bottom left of the page, there are two blue links: 'Provide Website Feedback' and 'Accessibility Statement'.

Thanks!

For more information, email
sys-help@loni.org

OPEN

 **nDemand**