

OPEN

 **nDemand**

Zach Byerly
LSU HPC
sys-help@loni.org

Louisiana State University
Baton Rouge
March 23, 2022

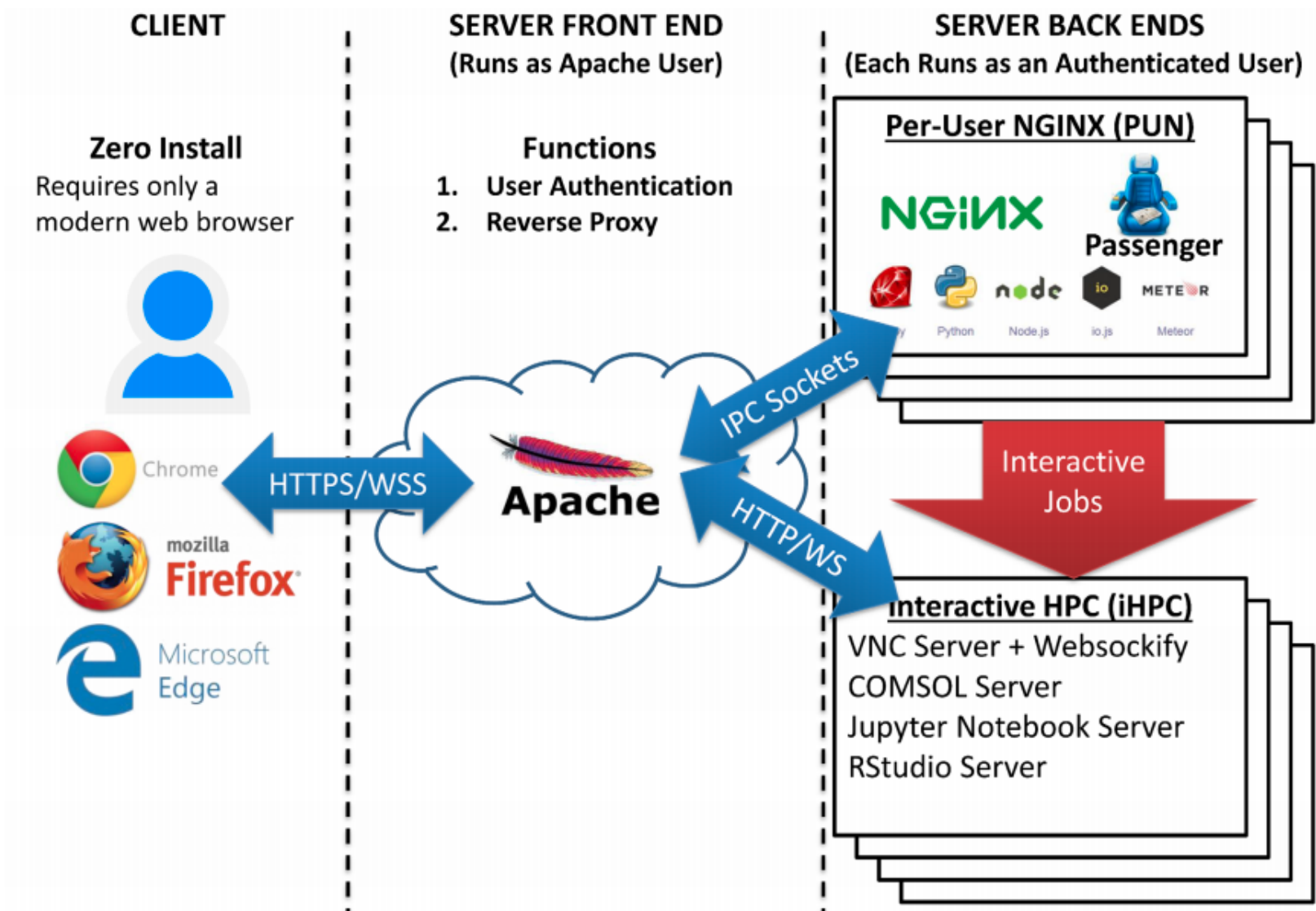
- **Today's training:**
 - What is Open OnDemand?
 - Features
 - Use cases
 - Open OnDemand at LSU
 - OOD on LONI hopefully
 - **Getting Started:**
 - File Explorer
 - Shell Access
 - Submit and Monitor Jobs
 - Jupyter notebooks
 - RStudio

➤ **Open, Interactive HPC via the Web**

- Easy to use
- Web-based access to supercomputers
- File Management
- Command-line shell access
- Job management and monitoring
- Applications (currently Jupyter and Rstudio)

➤ **NSF-funded project**

- SI2-SSE-1534949 and CSSI-Software-Frameworks-1835725
- Ohio Supercomputing Center
- Deployed at dozens of sites (universities, supercomputing centers)



- **Previously only available for SuperMike-II cluster**
- **New version up and running on SuperMIC**
- **Accessible on campus (wired and eduroam) and via LSU's VPN**
 - Installing GlobalProtect: `grok.lsu.edu` -> search "vpn"
 - Instructions for Mac, Windows, Linux
- **Launched late 2019**
- **Opened on SuperMIKE-II to all LSU HPC users February 2020**
- **Functionality currently available:**
 - File Browser, Allocation balances & Disk quotas
 - Submit and Monitor Jobs
 - Shell Access
 - Interactive Apps:
 - Jupyter Notebooks
 - RStudio

Thanks!

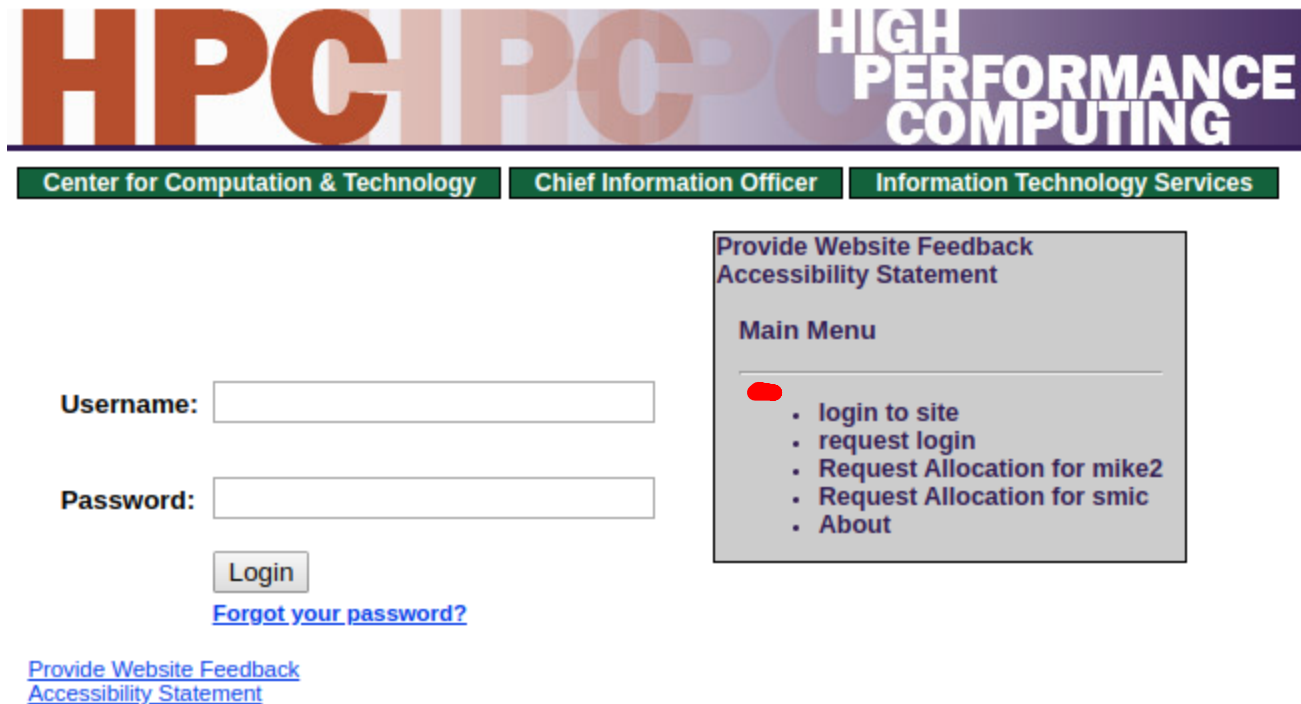
For more information, email
sys-help@loni.org

OPEN

 **nDemand**

➤ **What do I need?**

- **LSU HPC account (and active allocation)**
- **New users: accounts.hpc.lsu.edu → “request login”**



The screenshot shows the LSU HPC login page. At the top, there is a banner with the text "HPC HIGH PERFORMANCE COMPUTING". Below the banner, there are three navigation tabs: "Center for Computation & Technology", "Chief Information Officer", and "Information Technology Services". The main content area contains a login form with fields for "Username:" and "Password:", a "Login" button, and a link for "Forgot your password?". To the right of the login form, there is a sidebar with a "Main Menu" containing a red bullet point and a list of links: "login to site", "request login", "Request Allocation for mike2", "Request Allocation for smic", and "About". At the bottom left, there are links for "Provide Website Feedback" and "Accessibility Statement".