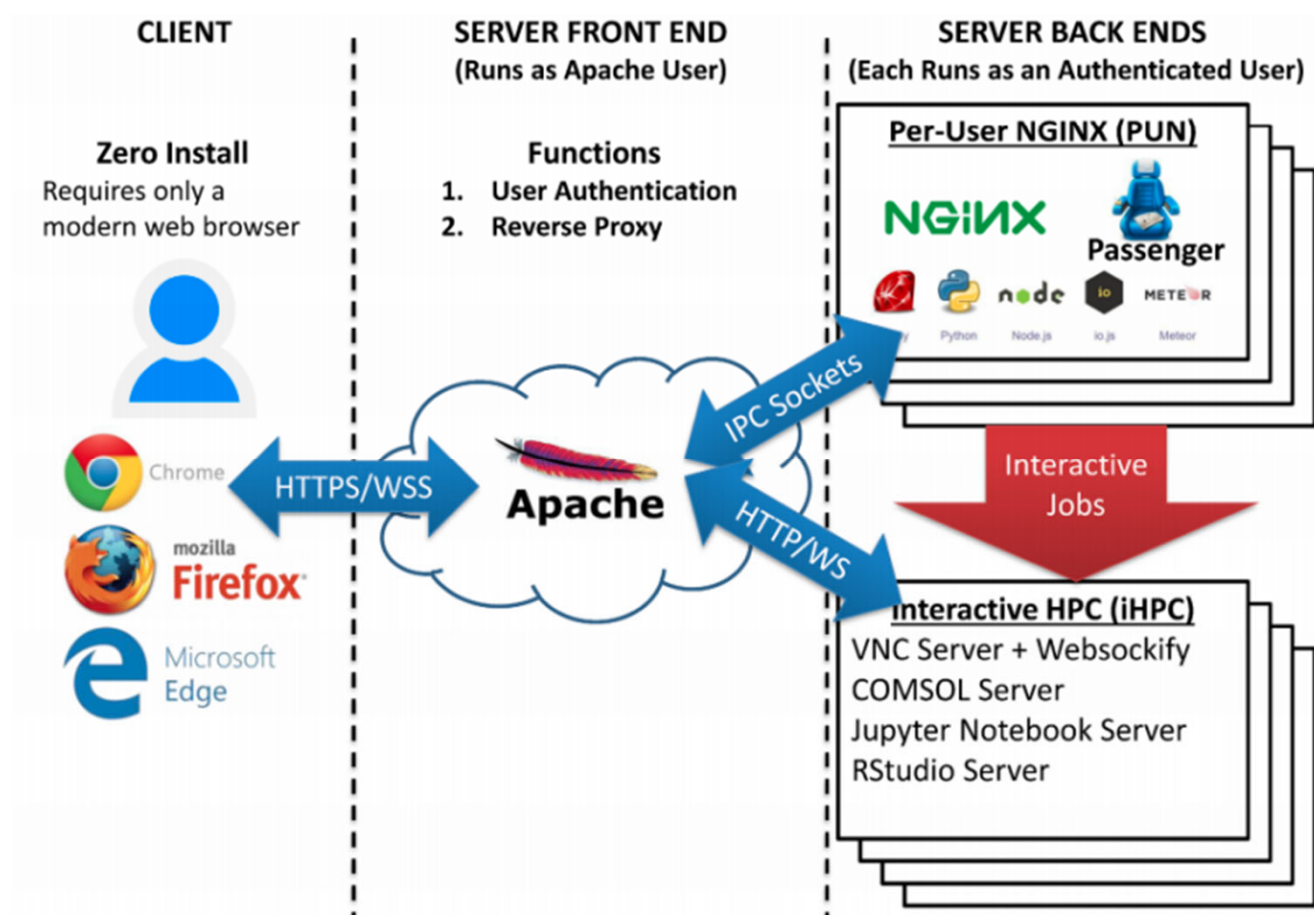


Open OnDemand: Interactive HPC via the Web

What is Open OnDemand

- Interactive HPC via the web
 - Easy to use, plugin-free, web-based access to supercomputers
 - File management
 - Command line shell access
 - Job management and monitoring
 - Interactive applications (e.g. Jupyter, RStudio)
- Developed by Ohio Supercomputing Center through NSF-funded projects
- Deployed at dozens of universities and supercomputing centers

Open OnDemand Architecture



Getting Started



Username:

Password:

[Forgot your password?](#)

[Provide Website Feedback](#)
[Accessibility Statement](#)

Provide Website Feedback
Accessibility Statement

Main Menu

- login to site
- request login
- Request Allocation for smic
- Request Allocation for deepbayou
- About



Username:

Password:

[Forgot your password?](#)

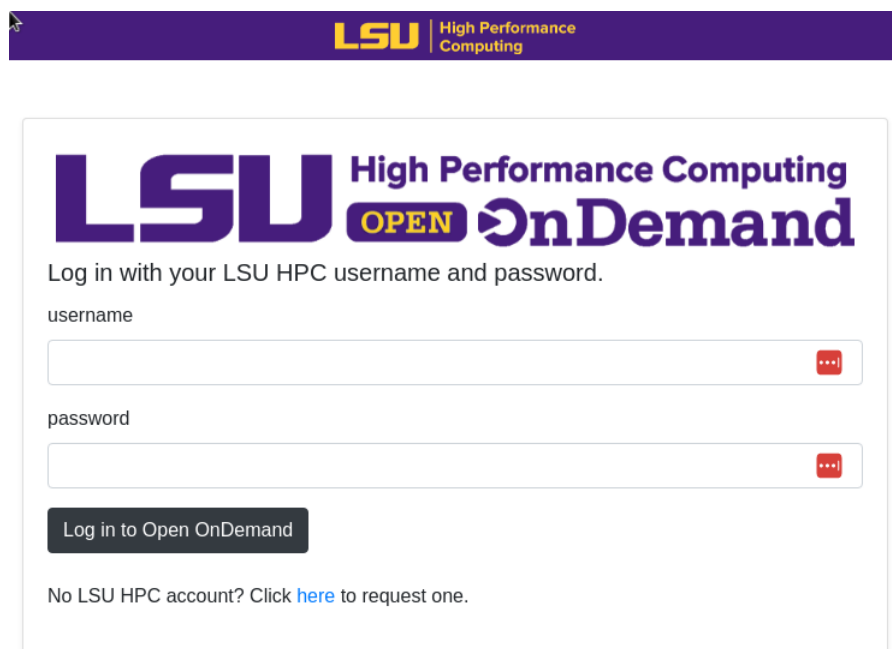
Provide Website Feedback
Accessibility Statement

Main Menu

- login to site
- request login
- Request Allocation for Dell_Cluster
- About

To access the portal: LSU/LONI HPC account
To run jobs/apps: LSU/LONI HPC allocation

Access Open OnDemand - LSU



LSU High Performance Computing

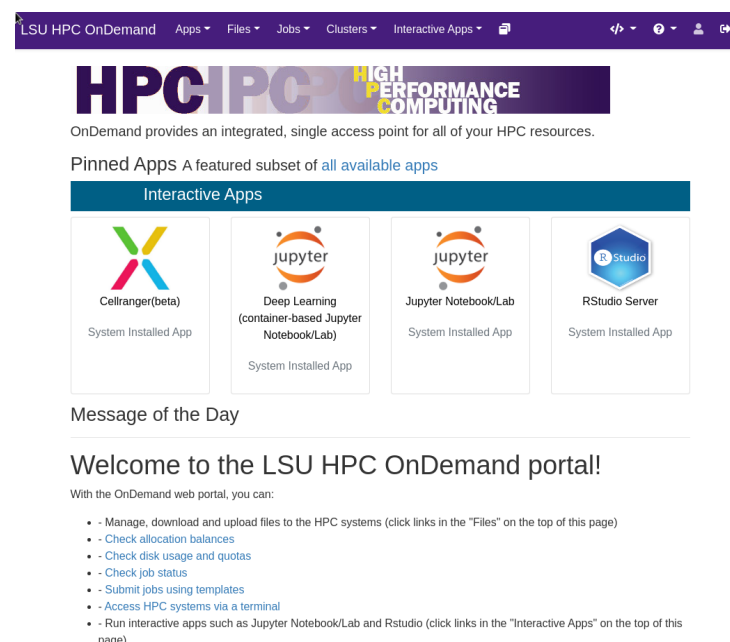
Log in with your LSU HPC username and password.

username

password

Log in to Open OnDemand

No LSU HPC account? Click [here](#) to request one.

LSU HPC OnDemand

OnDemand provides an integrated, single access point for all of your HPC resources.

Pinned Apps A featured subset of [all available apps](#)

Interactive Apps

- Cellranger(beta) System Installed App
- Deep Learning (container-based Jupyter Notebook/Lab) System Installed App
- Jupyter Notebook/Lab System Installed App
- RStudio Server System Installed App

Message of the Day

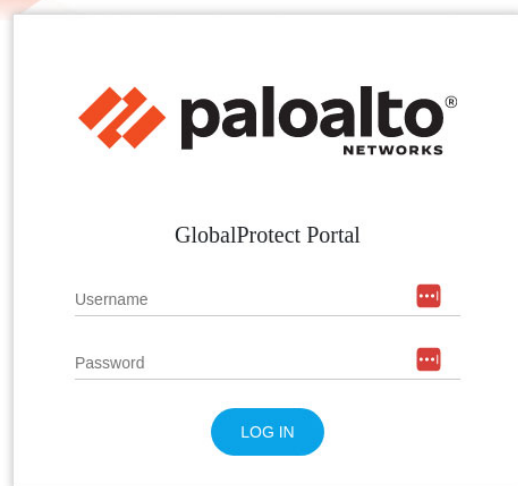
Welcome to the LSU HPC OnDemand portal!

With the OnDemand web portal, you can:

- Manage, download and upload files to the HPC systems (click links in the "Files" on the top of this page)
- Check allocation balances
- Check disk usage and quotas
- Check job status
- Submit jobs using templates
- Access HPC systems via a terminal
- Run interactive apps such as Jupyter Notebook/Lab and Rstudio (click links in the "Interactive Apps" on the top of this page)

Log in with LSU HPC credentials at
 SuperMIC: <https://ondemand.smic.hpc.lsu.edu>
 SuperMike-3: <https://ondemand.mike.hpc.lsu.edu>

Access Open OnDemand – LONI – Option 1

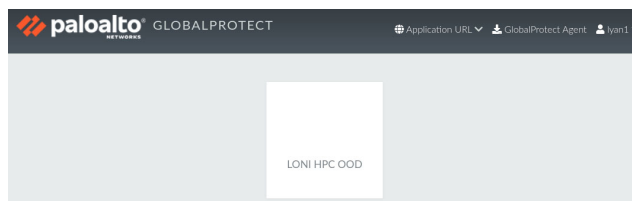


Step 1

Log in at

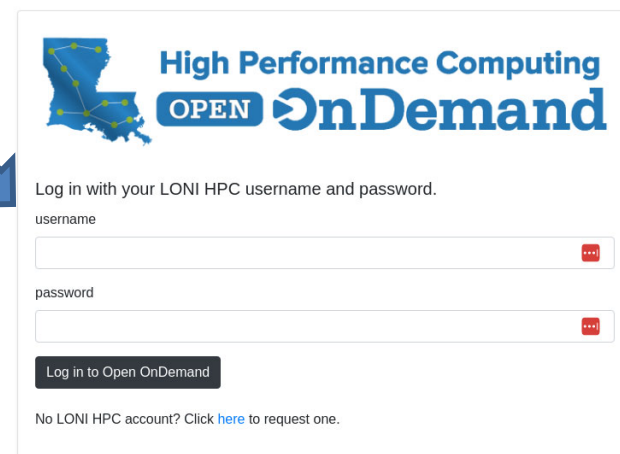
<https://hpcood.loni.org>

With LONI HPC
credentials



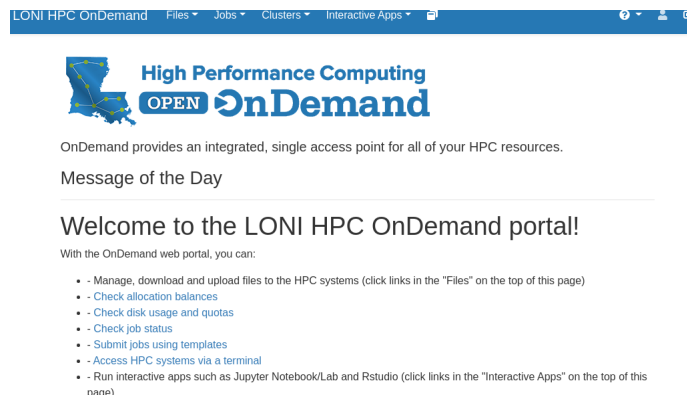
Step 2

Click on the "LONI HPC
OOD" link



Step 3

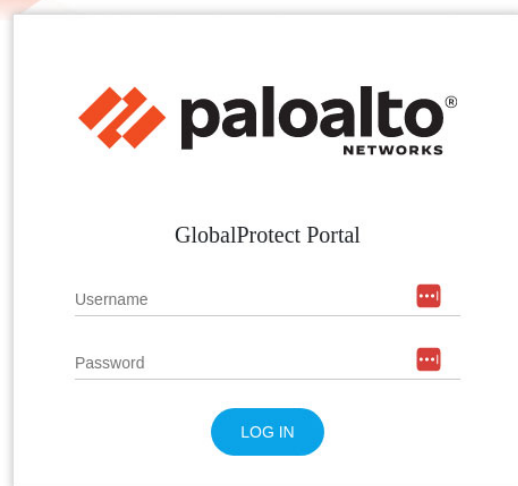
Log in with LONI HPC
credentials



Open OnDemand is currently on QB-2 only



Access Open OnDemand – LONI – Option 2

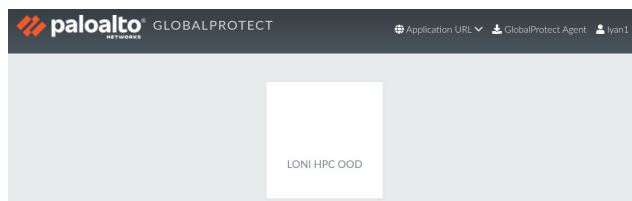


Step 1 (one time)

Log in at

<https://hpccod.loni.org>

With LONI HPC credentials



Step 2 (one time)

Download and install the
GlobalProtect Agent (Top
right corner)



OnDemand provides an integrated, single access point for all of your HPC resources.

Message of the Day

Welcome to the LONI HPC OnDemand portal!

With the OnDemand web portal, you can:

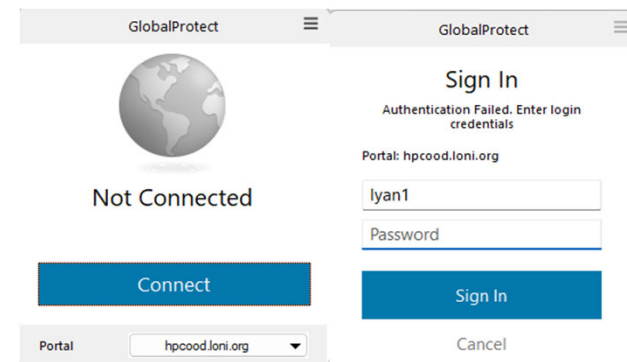
- Manage, download and upload files to the HPC systems (click links in the "Files" on the top of this page)
- Check allocation balances

Step 4

Log in with LONI HPC credentials at

<https://ondemand.qb.loni.org>

Open OnDemand is currently on QB-2 only



Step 3

Start the agent and log in
with LONI HPC credentials

Demo

Questions?