

# Open OnDemand: Interactive HPC via the Web

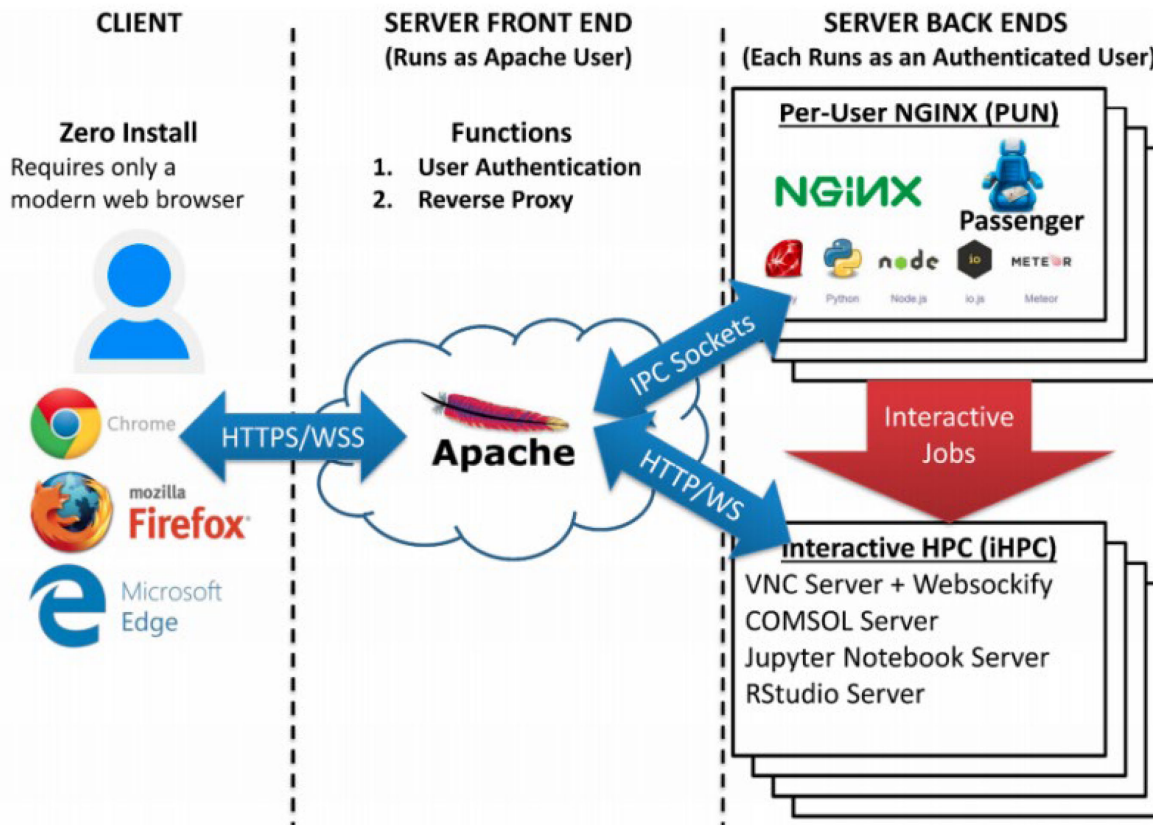
# Outline

- What is Open OnDemand?
- Open OnDemand architecture
- Open OnDemand at LSU and LONI
- Walkthrough (demo)
  - Logging into Open OnDemand
  - File explorer
  - Shell Access
  - Submit and monitor jobs
  - Interactive applications: Jupyter Notebook/Lab, RStudio, etc.

# What is Open OnDemand

- Interactive HPC via the web
  - Easy to use, plugin-free, web-based access to supercomputers
  - File management
  - Command line shell access
  - Job management and monitoring
  - Interactive applications (e.g. Jupyter, RStudio)
- Developed by Ohio Supercomputing Center through NSF-funded projects
- Deployed at dozens of universities and supercomputing centers

# Open OnDemand Architecture



# Getting Started



Username:

Password:

[Forgot your password?](#)

[Provide Website Feedback](#)  
[Accessibility Statement](#)

Provide Website Feedback  
Accessibility Statement

Main Menu

- login to site
- request login
- Request Allocation for smic
- Request Allocation for deepbayou
- About



Username:

Password:

[Forgot your password?](#)

Provide Website Feedback  
Accessibility Statement

Main Menu

- login to site
- request login
- Request Allocation for Dell\_Cluster
- About

To access the portal: LSU/LONI HPC account  
To run jobs/apps: LSU/LONI HPC allocation

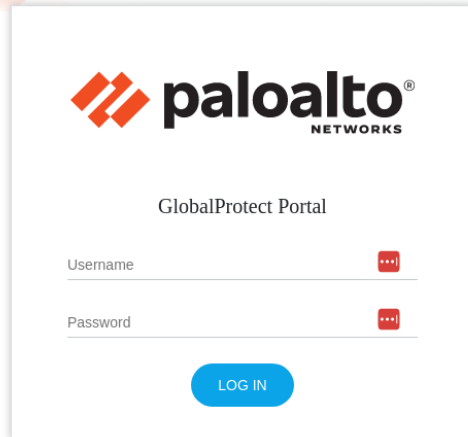
# Access Open OnDemand - LSU



Log in with LSU HPC credentials at  
<https://ondemand.smic.hpc.lsu.edu>

1. Open OnDemand is currently on SuperMIC only.
2. To connect outside of LSU campus, use the LSU VPN.

# Access Open OnDemand – LONI – Option 1

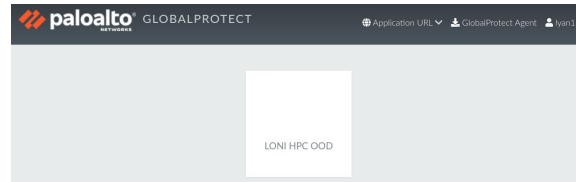


## Step 1

Log in at

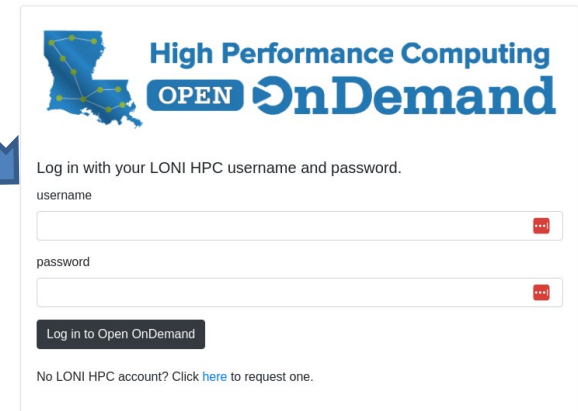
<https://hpcood.loni.org>

With LONI HPC  
credentials



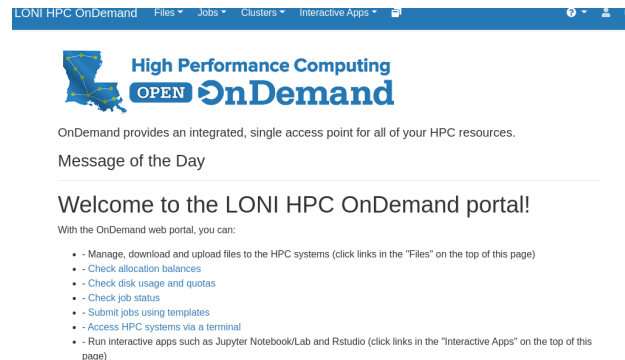
## Step 2

Click on the "LONI HPC  
OOD" link



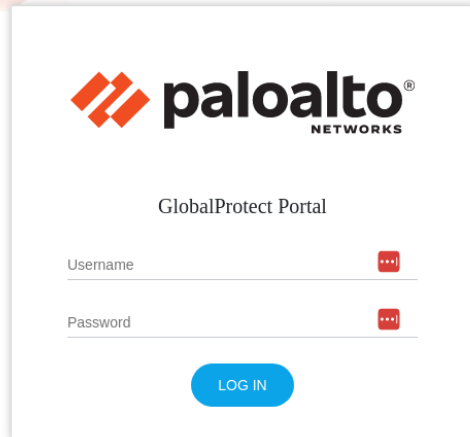
## Step 3

Log in with LONI HPC  
credentials



**Open OnDemand is currently on QB-2 only**

# Access Open OnDemand – LONI – Option 2

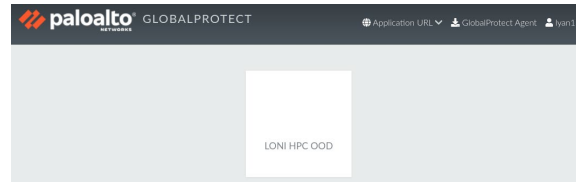


## Step 1

Log in at

<https://hpcood.loni.org>

With LONI HPC credentials



## Step 2

Download and install the GlobalProtect Agent (Top right corner)



OnDemand provides an integrated, single access point for all of your HPC resources.

Message of the Day

Welcome to the LONI HPC OnDemand portal!

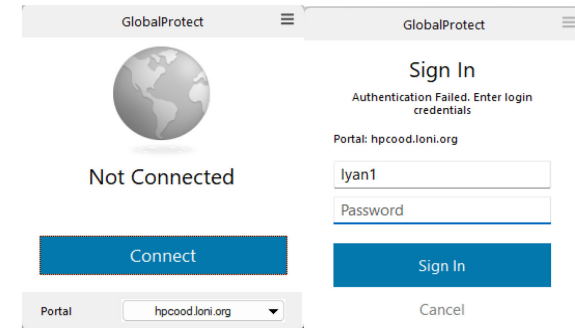
With the OnDemand web portal, you can:

- Manage, download and upload files to the HPC systems (click links in the "Files" on the top of this page)
- Check allocation balances

## Step 4

Log in with LONI HPC credentials at

<https://ondemand.qb.loni.org>



## Step 3

Start the agent and log in with LONI HPC credentials

**Open OnDemand is currently on QB-2 only**





# Demo

# Questions?